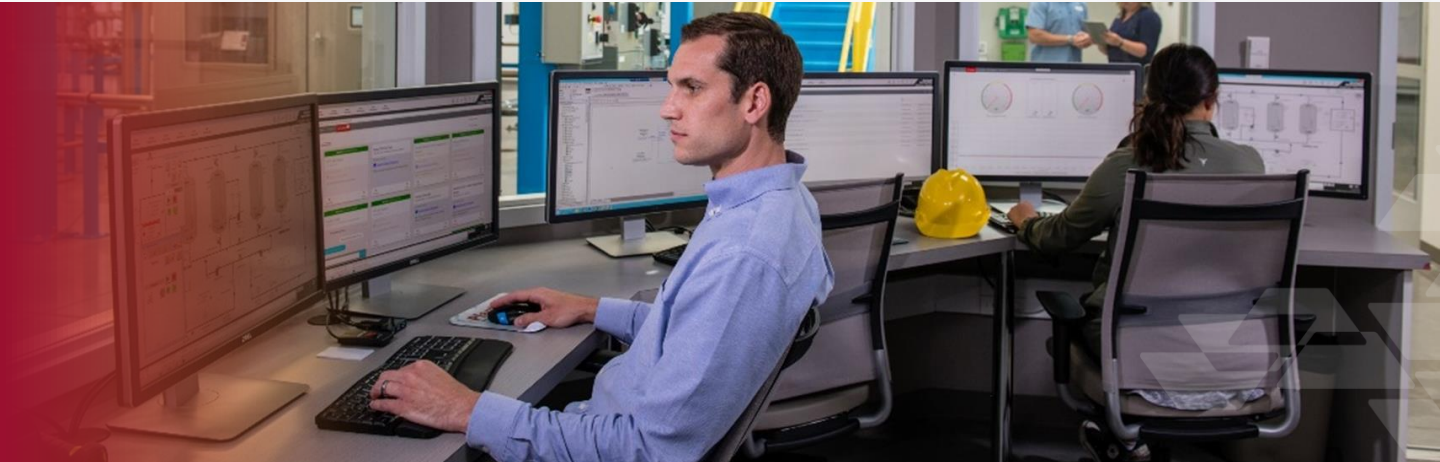


PlantPax® Quick Facts Sheet

Make better, faster production decisions with PlantPax®



Choosing the right distributed control system can give your business a competitive edge.

The PlantPax® system helps you make faster, better-informed production decisions and respond quickly to the demands of your customers' market variability. The Distributed Control System has been an integral part of your digital transformation strategy, helping you be more productive and profitable while reducing operational risk. Here's some of what you can expect from PlantPax®.

A fit-for-purpose automation platform that supports powerful features and capabilities

A process controller that provides additional capabilities designed to scale from the simplest automation task to the most demanding process application

What you'll get:

- **Enhanced operator performance** with embedded process instructions that provide additional capabilities to be able to quickly take action
- **Reduced downtime** through real-time hardware diagnostics that also help prevent minor issues from escalating into costly repairs with additional downtime
- **Scalability to enable the same technology and capabilities** for systems of different size and complexity
- **Improved operational visibility** with open standards including OPC/UA providing universal access to plant-wide data
- **Reduced downtime with run-time** data visualization that allows configuration changes without stopping the automation system so production can keep going
- **Reduced configuration effort** with a single-click alarm that simplifies the engineer experience
- **Efficient, reliable operation** with simplified lifecycle management that saves time and provides an upgrade path to the latest capabilities and features
- **Support to make updates efficient and consistent** with the PlantPax® Migration Tool



A fully redundant and flexible I/O platform that fulfills universal and high availability specifications and reduces total cost of ownership

What you'll get with the FLEXHA 5000™ I/O platform:

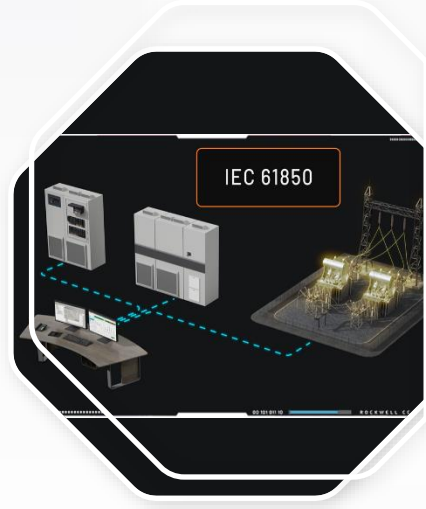
- **Rapid identification and resolution of issues** with real-time diagnostic capabilities, including wiring configuration and device health
- **Reduced complexity and cost of assembly** with a modular design that optimizes footprint and enables the safety I/O and base process I/O to be mounted in the same rack
- **Flexibility to configure each channel of the I/O module** as input or output, discrete or analog, HART or without HART
- **Ability to easily make late changes to the type or amount of I/O**, improve plant availability, and simplify project execution and maintenance
- **Reduced cost of spare inventory** by standardizing on one catalog item covering all of your spare I/O needs
- **High availability** through layers of redundancy in network adapters, power, and backplane



A unified environment that integrates process and electrical power to reduce risk, provide a unique plant-wide experience, and simplify access to information

What you'll get:

- **Streamlined engineering workflows and improved visualization** by eliminating the need for separate process and power systems
- **Improved asset management decisions and problem resolution**, enabled by a system architecture that integrates electrical protection devices using either IEC 61850 or Ethernet/IP protocols
- **Improved monitoring and control** of electrical protection devices, regardless of manufacturer, with a comprehensive library of devices and the ability to integrate new devices
- **Consistent interaction** with intelligent devices like drives, soft starters, relays, and PowerMonitor™ by leveraging pre-configured objects in the power device library

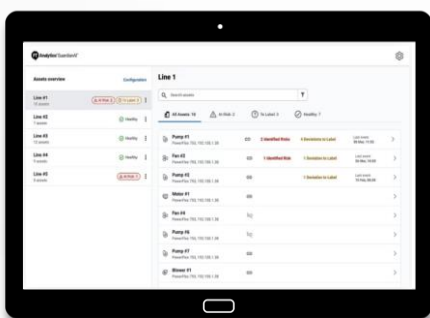


Powerful capabilities that solve your highest-value problems to create business results

Analytics that unlock digital insights to provide situational awareness for informed, smart decisions

What you'll get:

- **Improved visibility and faster decision making** with purpose-built frameworks that connect live and historical data from multiple sources into a single, contextualized enterprise view
- **Easy set up** with pre-built templates for alarms, objects, system maintenance, and more included in the standard library that saves your implementation time
- **Increased uptime** with intuitive, out-of-the-box dashboards and reporting for device health and statistics and system and operator log activity
- **Improved device health** with predictive analytics, powered by Guardian AI, that detects and predicts anomalies in drive-powered assets like your pumps, fans, and blowers
- **Advanced control capabilities** that optimize production



Cybersecurity that aligns with industry standards enabling you to achieve industry-leading protection

What you'll get:

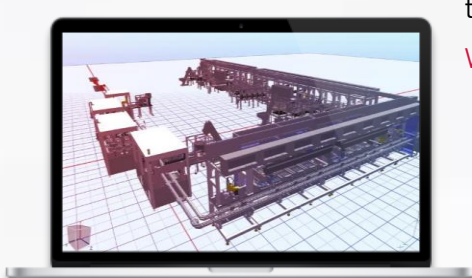
- **Compliance with key industry standards** like ISA99 and IEC-62443
- **Enhanced design flexibility and improved monitoring** of your most critical assets using zones of trust to isolate critical systems from non-critical ones
- **Faster security setup** with an intuitive checklist and configuration guidance as you securely connect information across the enterprise
- **Enhanced safeguarding** of your most critical assets with threat detection and end point protection
- **Enhanced protection of enterprise data** with encryption between servers and controllers



Flexible and effective simulation for seamless development and testing that reduces cost and minimizes risk

What you'll get:

- **Greater flexibility** and more accurate, effective results by designing, testing, and training in a virtual environment
- **Reduced commissioning time and cost** through exact/precise emulation of controller execution in a server-based environment that eliminates the need for physical hardware
- **Improved project execution** with greater design possibilities and more accurate results with built-in APIs that connect PlantPax® with digital twin and simulation models (from Rockwell Automation or third parties)



[Visit our website to learn more about PlantPax® Distributed Control System](#)

[Connect with us](#)